

PWS HalfSheet

A Publication of the PHILADELPHIA WATER COLOR SOCIETY

FOUNDED 1900

Cheryl Schlenker, President

Marie Bialek, Editor

President's Message

"Creativity is allowing yourself to make mistakes. Art is knowing which ones to keep." The cartoon Dilbert's author, Scott Adams pointed this out.



We all know that watercolor has some wonderful "happy accidents," but it's not always easy to know when to leave them alone! I paint regularly with a group of artists and one of our prime purposes is telling each other when to "step away from the painting!" Having a support group of painters is invaluable; we do everything from offering constructive criticism to schlepping each others' works to and from exhibits. Sometimes wine is involved. More often there is chocolate. We try to visit galleries and exhibits to keep from getting too set in our ways, and often share articles, books and DVDs. We all met when we were taking workshops and classes from particular instructors, and those instructors continue to mentor us. So, my message to you is, if you haven't already done so, find a group to whom you can relate, meet regularly, and share your paint, paper and aspirations.

We have some wonderful news! Marie Bialek, a brand new member, has volunteered to manage our newsletter. You are reading this thanks to her generous gift of time and effort. Please send any articles of interest, photos, and/or news of awards, exhibitions, and whatnot to her at marie.bialek@gmail.com.

We are coming down from the high of the 113th Exhibition of Works on Paper at West Chester University. Thanks to Gail Grams and Donald Leong for co-chairing this event and all the wonderful volunteers who joined us to help: Annie Strack, Dorla Dean Slider, Siv Spurgeon, Jane McGovern, Jane James, Terry

Boyle, Jane Miluski, Paul Schlenker, Jack Grams, Kathy and Jack Firpo, Joan Sobel, Vickie Dorsam, Nancy Durkin Green, Diane Cannon, Anna Bellenger, and the WCU staff mentioned elsewhere in this newsletter. I just love all the details that come together to make a great show, and I recommend volunteering in any capacity to get the opportunity to meet and support artists of all kinds.

Our Spring Members' Show will be at Widener University this March, chaired by Donald Leong and Wendy McClatchy. The prospectus is enclosed here, and will be on the website as well. I am looking forward to meeting you at our next events, and don't forget to welcome some "happy accidents" into your lives!

Meet the Editor



Marie Bialek meets Mary Whyte at the National Arts Club, NYC, Nov 2013

Marie Bialek is a resident of Media, PA and lives with her husband and two children. Her interests include watercolor painting, drawing, cooking, and photography. Most recently, she has studied watercolor with Sarah Yeoman in Hockessin, DE and with Jane Miluski in Wallingford, PA. A few of her favorite watercolor artists include Mary Whyte, Joseph Zbukvic, and Alvaro Castagnet. She will be studying with Keiko Tanabe in Spring 2014. Marie is excited to be the new editor and welcomes suggestions from the membership.

Sarah Yeoman's Watercolor



Sarah Yeoman demonstrates her technique for landscape painting at the Annual Members Meeting, Community Arts Center, Wallingford PA

Teacher, award-winning painter, poet, and musician Sarah Yeoman entertained the audience with her loose and juicy wet-in-wet method of painting from 2 photographs she had taken near her studio in the Adirondack Mountains.

During the past year, Sarah suffered the loss of her husband to cancer. He and she composed a book of drawings and poetry as they went through the course of his disease. Obviously still grieving this huge loss, she was able to share with the audience many of her insights and transformations that occurred during this year. Through the social media, she was able to connect with many other amazing people who offered her hope and also a chance for her to help them. She was able to share how important the social media became to her and she pointed out that as artists, this is an extremely valuable tool. Many of the methods she uses in her paintings are demonstrated through YouTube videos and are easily accessed by going to the YouTube website and searching for her name.

And all the while she was discussing this process, she was able to complete the painting of two beautiful landscapes of luscious water reflecting dark trees, rocks, and mountains. Not only was I mesmerized by her inspirational emotional discussion, but I learned about and was inspired by her painting technique. I felt I had to go home and start painting - she made it look so easy. Two of the colors she used were new to me. Holbein's Verditer is a blue that she calls "liquid atmosphere" and Hobein's Lavender is like a mountain in the far distance. She used a big brush and lots of color on wet, wet paper.

I advise anyone to look her up and see if you aren't as inspired as I was. She has many ways of painting and uses many different types of mediums. To view her teaching and workshop schedule and to see some of her amazing works, please visit www.SarahYeoman.com

~Cheryl Schlenker

Area Students Win PWCS Scholarships

Congratulations to the six students of local schools for being selected by their faculty to receive a \$250 scholarship from PWCS! Kasey Gratton (Moore College of Art and Design), Lucia Thome' (Pennsylvania Academy of Fine Art), Courtney E. Hicks (Tyler School of Art), Kaitlyn Ryan (Hussian School of Art), Mariel Baldwin (University of the Arts), and Maya Culbertson (Philadelphia High School for the Creative and Performing Arts) have demonstrated superior skills and have won our awards for Competence and Excellence in Works on Paper Under Glass. They also received a Certificate of Merit and one year's Associate Membership, as well as an exhibition catalog and an invitation to submit entries to our exhibits.

One mission of the PWCS is to support and encourage artists working in watercolor and works on paper. In light of this, and the rising costs of art supplies, the Board of Directors raised the scholarship award from \$200 in 2012 to \$250 in 2013 and plan to raise the scholarship to \$300 this spring. Hopefully, this amount can continue to be escalated in coming years. Last year, renowned artist Mary Whyte donated \$500 to our scholarship fund in honor of the role that PWCS played in her own development. Please consider helping a local student realize his or her dream of pursuing art as a career. Donations may be sent to PWCS, 7 Lafayette Circle, Media, PA 19063.

Minutes of Annual Members' Meeting

On Sunday, September 11, 2013, the Annual Members' Meeting was held at the Community Arts Center in Wallingford, PA. (www.communityartscenter.org.) Cheryl Schlenker called the meeting to order with a quote by Degas, "Art is not what you see but what you make others see." And then for contrast, she quoted Grandma Moses who said, "If I hadn't started painting I would have raised chickens."

There were about 25 to 30 people in attendance at the meeting. The Board candidates, Donald Leong, Kathy Firpo, Wendy McClatchy and Terry Boyle, were joined by existing Board members Gail Grams, Mick McAndrews, Jane McGovern, Annie Strack, and Dee Casner. It was reported that both Siv Spurgeon and Jane James have retired from the Board, but continue to work for PWCS in the capacity of membership chair (Siv) and catalog creator (Jane). It was pointed out that we are always looking for new Board members, especially those with electronic skills.

The treasurer's report was given. Thanks to the generous donations of many members, we were able to present \$6,200 in awards this year, and fully fund our catalog. Gerry Lenfest donated \$4,500 towards the catalog production, and Dorothy Nofer donated \$1,000 to the endowment fund in her late husband Frank's memory.

Our Membership total stands at 641, with 173 associate members, 82 honorary lifetime members, 106 affiliates, and 276 signature members. New signature members were congratulated.

According to the report on the 113th Anniversary Exhibition of Works on Paper at West Chester University, there were 327 entries of which 91 were chosen for entry representing artists from 22 states and Singapore (as of this printing, two paintings were sold). Much thanks is owed to John Baker, Art Department Chair of West Chester University and his staff who worked very hard to make everything run smoothly.

Gail Grams, recording secretary who will also be retiring from the Board announced that all candidates for the Board of Directors were unanimously elected.



Cheryl Schlenker reads the list of new signature members at the Annual Members' Meeting

After the meeting was adjourned, free samples of Dynasty brushes were distributed, and members were offered free posters of old PWCS shows. We hope to continue to offer samples of various art supplies at our events.

Directly following the meeting Sarah Yeoman gave a lively demonstration of her wet-in-wet techniques for painting water and trees (see page 2).

~Respectfully submitted by Gail Grams

Shenzhen International Exhibition

Congratulations to the following eleven PWCS members whose work was accepted in the Shenzhen International Watercolor Biennial 2013-2014, to be held in Shenzhen City, China, from December 10, 2013 through January 10, 2014. A total of 2,825 entries were received and 130 Chinese entries were selected along with 130 entries from 53 other countries and regions.

- Angela A. Barbalace
- Frank Webb
- Laurin McCracken
- Doris Davis-Glackin
- Dave Maxwell
- DeEtta Silvestro
- Carol Staub
- Denny Bond
- Dorrie Rifkin
- Denise Athanas
- Eileen Mueller Neill
- Frank Webb

113th Anniversary Exhibition of Works on Paper



Nancy Barch leads a group tour through the Anniversary Exhibition and provides a critique of the entries

If you didn't get over to West Chester University to see the 113th Anniversary Exhibition this fall, you have my condolences. A very interesting and diverse array of 91 paintings was expertly hung in WCU's incredible new gallery. John Baker, the Chair of the Art Department, not only hung the exhibit, but also designed the gallery when it was built last year. Donna Zagotta selected the entries from 22 states and from as far away as Singapore, and Jim McFarlane chose the 22 outstanding recipients of awards.

Donald Leong and I had the honor of assisting Jim while he spent a few hours deliberating over some very difficult decisions. We took down and lined up his entire first run choices of paintings, and he had cleverly taken photos of the wall arrangements so that we could get them back the way they were hung originally. Then he thinned his selections painfully and with great care to match the awards to the donor's sometimes specific directives. It speaks highly of our diversity that the first award went to a pastel painting (Carol Kardon's Changing Sky.) There were 2 artists who won Crest Medals (Doris Davis-Glacken and Janet Milnazik) based on the number of awards they have won over the years, and Siv Spurgeon was awarded the Crest Medal for Outstanding Service to the Society (see article elsewhere in the Half/Sheet.)

During the exhibition's run, Mick McAndrews presented a lively demonstration of working with a limited palette, and Nancy

Barch took us through an interesting gallery talk with her often acerbic wit.

Much of the work in putting together this show was handled by willing volunteers, but special mention has to go to WCU's staff and interns. Administrative Assistant Laurie Moran stepped in with willing and accessible help while John Baker was away on parts of his sabbatical. Four student interns, Daniel Mulligan, Patrick Cabry, Samantha Diamond, and Colleen Modugno also worked very hard to make everything go smoothly.



James McFarlane decides on winners at West Chester University Gallery

We had such a great experience with the University that we are returning to this venue for our 2017 exhibition.

~Cheryl Schlenker

Crest Medal

Congratulations to Doris Davis-Glackin and Janet Milnazik who were awarded the Crest Medal for having shown consistent excellence in works entered in our annual exhibition. Siv Spurgeon has also been awarded the Crest Medal for Outstanding Service to the Society.

Save the Date: Spring Paint-Out!

Wendy McClatchy, one of our Board members, has made arrangements with the Willistown Conservation Trust to sponsor the PWCS Annual Spring Paint-Out at their Willisbrook Preserve in Malvern. It will be held on Saturday, May 31st. (This is not the Memorial Day holiday weekend.) More details will follow on our website, but keep this in mind to warm your thoughts during the coming winter months!

Member News (*signature members)

Jennifer Cadoff*

- Two Person Show, Points of Origin, Artists' Gallery, Lambertville, NJ; October 2013.

Doris Davis-Glackin*

- Mary Hill Memorial Award, Catherine Lorillard Wolfe Art Club's 117th Open Exhibition at the National Arts Club in New York.
- Third Place Award (juror John Salminen), Kentucky Watercolor Society's Aqueous USA 2013.

Keiko Kishi

- Saku General Hospital Art Exhibition; August 2013.
- Komoro Kogen Art Museum; September 2013.
- Saku University; October 2013.

Jinnie May*

- The Nummie Warga Award, New Jersey Water Color Society's 71st Annual Open Juried Exhibition, Middleton Arts Center, Middletown, NJ.
- Award of Excellence, 33rd Annual Mountain Art Show, Bernardsville, NJ.
- The Judson Outfitter's Award, The North East Watercolor Society's Annual International Show, Kent, CT.
- Award of Merit, The Garden State Watercolor Society's 44th Annual Open Juried Exhibition, Stockton, NJ.

Mick McAndrews*

- Laundry Day in Napoli selected by juror Frank Webb to receive the Award of Merit, 34th Annual Pennsylvania Watercolor Society's International Exhibition.
- Received signature status in PWS.
- Third Place Award for Exaggerated Waterfall, Plein Air Brandywine Valley Competition; October 2012.

Florence Putterman*

- Solo Exhibition: Dancing Crane Gallery, Bradenton FL; February 2014.
- Group Exhibitions: Galerie Recolte, Fukuoka Japan; Art Center Sarasota, Sarasota FL, November 2013; and Walter Wickiser Gallery, NYC; July-August 2013.

Patricia Hafer Reeder

- Solo Exhibition, Highlands Gallery, Wyomissing/ Reading, PA; September to November 2013.
- The Strathmore Papers Award, Hanover Arts Guild Juried Exhibit; August 2013.
- 2nd Place Award, Berks Art Alliance 2013 Annual Membership Exhibit.

Roland E. Stevens

- 1st Place Award, Niagara Frontier Watercolor Society; Spring 2013.
- Adirondacks Express Award, Adirondacks National Exhibition of American Watercolors 2013.
- 1st Place Award in 5th Annual Mountain Maryland Plein Air Competition.
- Artist Excellence Award, Central New York Watercolor Exhibition.
- 1st Place Award at Billsboro Winery 2013, Quick Paint Competition.
- Judge for Pittsford Art Group Spring Show, Western Wayne Art Group Show and Sacketts Harbor Plein Air Competition.

Sara Steele

- The 2014 edition of Sara Steele's Calendar released by Tide-Mark Press (published annually since 1981, sold throughout the USA, Canada, Europe and Australia).
- Watercolor Demonstration, Howard Pyle Studio; November 7 2013.

Siv Spurgeon*

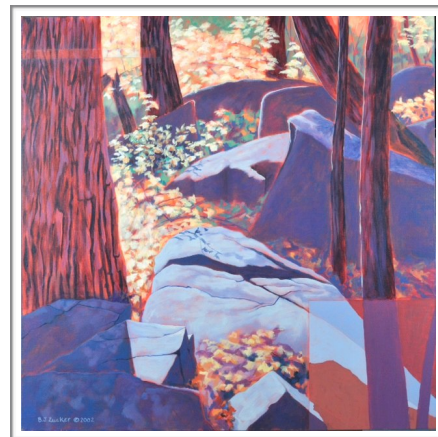
- Thompson Memorial Award at the Delaware Valley Art League Exhibition at Wayne Art Center.

William Welch*

- C. Robert Perrin AWS Outstanding Achievement in Watercolor Painting.
- The Pat Gardner Memorial Excellence in Plein Art Award, Artists Association of Nantucket.

Barbara J. Zucker*

- *40 Years of Painting, A Visual Journal*, on display at the Berman Museum of Art's main gallery; Jan 27 to March 30, 2014 (reception on Jan 30th from 4 to 7 PM).



Stone Hill October I: Sunlit, 36" x 36", acrylic on canvas by Barbara J. Zucker

2014 PWCS Members Exhibition

As we prepare for the holiday season, keep in mind that the Annual PWCS Members' Exhibition will be held from March 18 through May 17, 2014 at Widener University, Chester, PA.. Delivery Thursday, March 6, 2014 from 10 AM until 2 PM.

All Signature and Associate Members are invited to submit one (1) entry. Hand delivered works only. Water media, drawings, hand-pulled prints and pastels are acceptable. Work must be original and on or of paper. Any collage elements must be of paper and must be the work of the artist. Reception is scheduled for Saturday, April 5, 2014, 2 PM until 4 PM, awards at 3 PM.

Look for the prospectus enclosed in your issue of Half/Sheet or on the PWCS website. Co-Chairs: Donald Leong and Wendy McClatchy.

Did You Know?

Our website, (www.pwcsociety.org) can help you learn how to make digital submissions for exhibitions. To access information about creating electronic submissions, go to the "Quick Links" box on the right side of the screen, under the title header. Click on "Prospectus, Guidelines, FAQ." Then choose "Guidelines for digital entries: Entry_Digital.pdf"

We plan to establish a help line before our next Anniversary Exhibition to assist you with any questions concerning your submissions. We will be accepting electronic entries by e-mail.

Honorary Life Member

Congratulations to Mary Malischewski on having attained Honorary Life Membership Status.

In Memorium

Louis de Moll

Calendar of Events

- March 6, 2014 --Submission of work Member Show*
- March 18, 2014 through May 17, 2014 -- Show Dates*
- April 5, 2014 -- Reception (2--4 PM)*
- May 20, 2014 -- Accepted Work Pick-up (10 AM to 2 PM)*
- May 31, 2014 - Annual Spring Paint Out (Willisbrook Preserve, Malvern PA)

*Member show will be located at Widener University Art Gallery, Chester, PA



Anna Bellenger, Doris Davis-Glackin, Siv Spurgeon, Erika Neidhardt and Diane Cannon in front of Carol Kardon's award winning painting.

2013 PWCS Award for Outstanding Service to the Society

In order to demonstrate their appreciation for the caring, diligent dedication Siv Spurgeon has given to our Society over the years, the PWCS Board presented her with the 2013 PWCS Outstanding Service Award.

A PWCS member for over 18 years, Siv has spent 10 years on the Board of Directors including 2 years as Newsletter coordinator, and 4 years as President. Siv has also chaired 7 exhibitions and is currently in her 5th year as membership chair. Although she has officially retired from the Board, Siv continues to work tirelessly to manage our membership base, keep records current and help to update our website with an interactive directory database. Even beyond all these years of hard work, Siv has set a standard to which many aspire but few attain.

While working tirelessly for the Board, Siv finds time to paint exquisitely, winning many prestigious awards, and has been selected to participate in the Studio Group at the Howard Pyle Studio in Wilmington.

In winning this award, Siv joins an esteemed group of former recipients including Judy Antonelli, James McFarlane, Jane Bertram Miluski, and Susannah Hart Thomer.



Morning in the Train Yard, 22" x 15", watercolor, by Mick McAndrews, PWCS

The Unlimited Palette

The story pours from his brush
of steel
and smoke
and destinations
grey violet light of filtered sun
through summer rain
impenetrable locomotive black
merging solid form
with transparent shadow
and turquoise grey glancing off shoulders
of men bound for who knows where
while white grey smoke billows and becomes
light as air
a limited palette in the hands of a master
sings sweeter than one who has a thousand colors
at his call
atmosphere
atmosphere
atmosphere
with 3 colors he says it all

~ An ode by Sarah Yeoman to Mick McAndrew's demonstration using a limited palette at West Chester University, October 12th

Philadelphia Water Color Society

Cheryl Schlenker, President	610.891.1840
Donald Leong	610.269.7793
Jane McGovern, Vice President, Submissions Receive	610.565.6943
Dorothy Flanagan, Corresponding Secretary	610.565.6943
Dee Casner, Treasurer	610.566.0676
Deena Ball, Site Selection	610.789.1003
Mick McAndrews, Webmaster	610.518.6960
Wendy McClatchy	610.353.1213
Katherine Lofaro Firpo, Education & Outreach	610.667.1033
Siv Spurgeon, Membership	610.544.1829
Sarah Yeoman	302-528-1376
Marie Bialek, Half/Sheet Editor	215-688-6770

General information	215.569.3955
Email	PWCsociety@gmail.com
Website	PWCsociety.org

Half/Sheet deadlines: March 16 for Spring issue; July 15 for Fall issue; November 15 for Winter issue

Please send information to: Marie Bialek, Half/Sheet Editor: marie.bialek@gmail.com
